

TYPES KE1000/KE2000

# KIEKENS

## industrial vacuum cleaners

for an improved  
environment



# KIEKENS PRODUCTS

**leaders in industrial vacuum cleaning technology**



Kiekens Products, an international company, sets the standard in commercial and industrial vacuum cleaning. Their extensive sales and service network assures customers of the best possible solution to their problems. All products, developed and manufactured in house, are thoroughly tested and quality controlled before shipment. Their robust construction, mobility, ergonomics, quality and flexibility combined with an impressive performance ensures years of trouble free operation.



## **KE1000 and KE2000: impressive performance**

The KE1000 (single phase) and KE2000 (three phase) are of modular construction which allows adaptation to suit customers' special needs. Both of these units, from Kiekens' whisper quiet range, were developed to meet the demand for improved working place conditions. The KE2000 can be used in dangerous environments such as explosive dusts and flammable materials.



## **Complete range**

An extensive range of accessories, including primary separators, is available allowing pick up of a wide variety of products (liquids, chips, sparks, textiles, bulk spills, etc.).







**Filter monitoring**  
Indicates when filter needs cleaning.



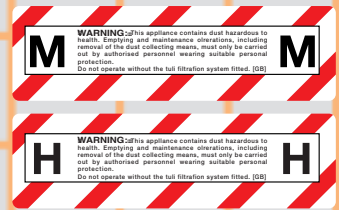
**Motor unit**  
Quiet 63 dB(A). Outlet air discharged vertically to avoid air currents at work station.

**KE2000 motor unit**

A two- or three-stage turbo fan driven by a three-phase motor, for problem-free continuous cleaning with a high vacuum and large air volume.

**KE1000 motor unit (illustrated)**

Two-stage suction units 2 x 1100 W, 3 x 1000 W or 2 x 1500 W alternating current, with separate cooling fans for problem-free suction. The units have thermal protection against overheating and an interference suppression capacitor to comply with the latest EMC directives.



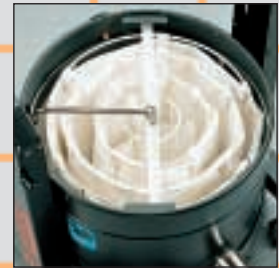
TÜV approved in accordance with EN 60335-2-69 for the dust classes M and H.

**Handle**

Can be adjusted to three heights and is, thus, suitable for any stature. Functions: pushing the cleaner, lifting it and unlocking the dust container.

**HEPA filter (optional)**

A secondary HEPA filter on the suction side retains 99.997% of materials hazardous to health.



**Filter**

1.8 m<sup>2</sup> pleated PNV bag filter with supporting basket. Simple to dismantle and reassemble. Can be dismantled from the clean upper side and be removed in a plastic bag placed in the dust container. Various other filter qualities are available for more extreme applications.



**Cyclone primary separator**

Effective separation of coarse dust particles which extends the filter bag life considerably.

Illustrated: KE1000



**Filter tappers**  
Powerful cleaning of the filter by an ergonomically-operated foot pedal.



**Dust container**  
Provided with two robust handles. A 55-litre dust container and a sealable plastic disposal bag can be supplied as options.



**Fixed floor-cleaning attachment (optional)**

Very effective for large areas such as in stores, stables, sports centres and production areas.

**Hose connector**

Quick-acting (60 mm diameter) hose connector.

# SPECIFICATIONS

## KE1000 SINGLE-PHASE

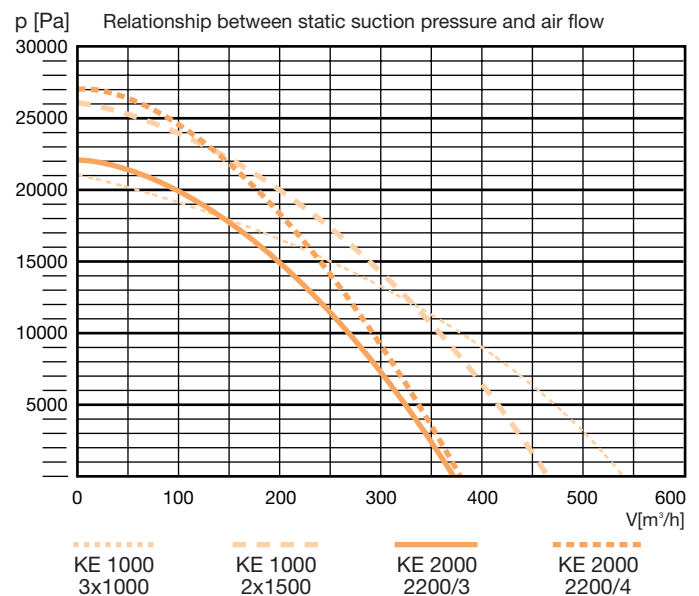


## KE2000 THREE-PHASE



motor power [W]	2 x 1.100	3 x 1.000	2 x 1.500	2.200	2.200
turbo compressor	2-stage	2-stage	2-stage	3-stage	4-stage
suction pressure [Pa]**	21000	20500	24500	21000	24000
air flow [m³/h]**	410	540	460	330	300
voltage [V]/[Hz]*	230 50/60	230 50/60	230 50/60	400 / 50	400 / 50
protection level	△	△	△	IP55 △	IP55 △
electrical protection class	I	I	I	I	I
electrical connection	10 m cable with Euro-plug			10 m cable with plug with phase exchanger	
electrical protection	temperature protection			motor protection cut-out with phase sequence indication	
motor cooling	forced	forced	forced	forced	forced
noise level [dB(A)]***	63	66	67	68	68
filter area [m²]	1,8	1,8	1,8	1,8	1,8
mean filter permeability	<0.1%	<0.1%	<0.1%	<0.1%	<0.1%
special filters possible	yes	yes	yes	yes	yes
HEPA filter area [m²]	2,5	2,5	2,5	2,5	2,5
mean HEPA filter permeability	<0.003%	<0.003%	<0.003%	<0.003%	<0.003%
dust container capacity [l]	35 (55)	35 (55)	35 (55)	35 (55)	35 (55)
weight [kg]	62	67	62	87	87
dimensions L x W x H [mm]	740x665x830	740x665x830	740x665x830	740x665x885	740x665x885

\* other voltages on request \*\* measured at the inlet \*\*\* measured at 1.5 m.



Kiekens Products B.V.  
 P.O. Box 99  
 7600 AB Almelo - NL  
 tel. +31(0) 546 - 87 15 55  
 fax +31(0) 546 - 87 19 85  
 www.kiekens-products.com  
 info@kiekens-products.com