

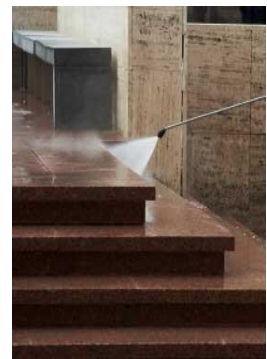


better products
cleaner environment

MONSOON

KC110

High Pressure Cold Water Cleaner



is customized for demanding applications in commercial and public area cleaning works. Mounted on a powder coated steel frame trolley, it incorporates Italian made pumps and motors. Its Hawk pump unit, with ceramic sleeve pistons and forged brass cylinder head for maximum resistance to water erosion, is long proven and highly regarded for its rugged durability; coupled with a Nicolini motor well known for its high quality. Assembly design and other components used are all also optimized for high stress tolerance.



• **Low maintenance pump with gauge**
Rugged internal component designs ensure a longer and smoother operating life, lower maintenance and downtime.



• **Main switch with circuit breaker**



• **Automatic motor cut-off/reactivation**
The automatic switch immediately cuts the motor off upon valve closure to conserve power and reduce wear and tear. Activates instantly upon re-opening the valve.



• **Durable 1450 RPM 4-Pole Motor**
Sturdy motor with low revolution system reduces wear and tear for motor and pump

Construction:

* **Sturdy, Durable, Rust-resistant stainless steel trolley**

* **Large accessory platform and lance holder** * **Large maneuvering wheels and lockable front castor**

Standard Accessories:



45m nylon braided water supply hose



Quick coupling for water supply hose (matches to water inlet quick coupling)



Quick couplings on lance and high pressure water hose for easy connection & detachment



Standard shut-off contractor lance with cut-off valve



Pressure release valve for flow adjustment

rotating connector



30m high pressure hose; highly abrasion resistant, lightweight with quick couplings



Optional trigger gun with lance

Technical Specifications	Monsoon KC110
Operating pressure, max	100 Bar
Water flow, max	660 ltr/hr
Power absorbed	2.2 kW
Power supply	230V 50Hz 1Ph
Motor	4 Pole 1450 rpm
Water intake temp, max	50°C
Dimensions (body) (L x W x H)	71 X 56 x 92 cm
Weight (without accessories)	52 kg